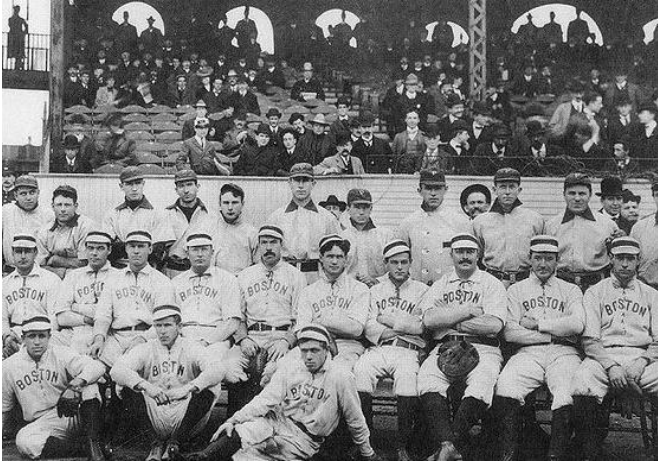


Kent Chronicles

1901-1910, Part 2



❖ **1901**—This prestigious international prize is first awarded for the categories of Physics, Chemistry, Medicine, Literature and Peace in Stockholm, Sweden:

❖ **1903**—The Major League teams from Boston and Pittsburgh play in the first annual edition of this championship event of American baseball:

❖ **1904**—Construction begins on this man-made waterway connecting the Atlantic and Pacific Oceans:

❖ **1905**—This “sinful” Southwestern U.S. city is founded when 110 acres are auctioned off by the San Pedro, Los Angeles and Salt Lake Railroad:



❖ **1908**—Canadian author Lucy Maude Montgomery publishes this popular novel about a spunky red-haired orphan girl:

❖ **1910**—Returning after nearly 75 years, this famous astronomical object is seen in the night sky for several evenings in April:

BLOOMERS & BICYCLES

In the 1900s, life began to move at a faster pace with many new inventions, such as the telephone, electric light, and the automobile, that gave people more luxury and freedom. The new two-wheeled cycle was the craze of the country. Women designed a practical outfit for the avid cyclist consisting of a tunic dress worn over loose trousers gathered at the ankle. Later this was revised into a split skirt with gathers under the knee, called bloomers.

*Gormully and Jeffery
Bicycle Ad, 1900s*

*Source: "History
of Technology" blog*



*Columbia Bicycle Catalog,
1902*

*Source: "Found in Mom's
Basement" blog*



Photo, 1900s

Source: Museum Collection

In the Mail...



**Post Master Lewis Hardy and Assistant Nell Wood Guiberson
Inside Kent Post Office, 1900s**

“From 1902 to 1913 Lewis Hardy was the post master when he built a post office on First Avenue. His assistant was Nell Wood and Guiberson’s second wife. There were three major routes established in 1904. The first route: route one, went up the east hill to Lake Meridian through Suisse Creek area. Route two was established to cover O’Brien area and west Kent. In 1909, route three was twenty-six and one half miles around the River Road and circled the Valley to River Road in Auburn. This route also included the east hill area. In 1907, a postal employee received \$50 a month. Later he earned \$100 a month. At that time, the

employees were required to own and feed their own horses, and keep the buggy or other transportation in repair. When the automobile came into use, he was required to keep that in repair.”

-From *History of Kent,
Washington*
by C. E. Cameron



Hardy and Guiberson outside Kent Post Office, 1909



Kent Odd Fellows, 1900s

“The Titusville Lodge no. 34, Independent Order of Odd Fellows, was instituted April 2, 1885... making it older than either Kent or the State of Washington... They had no regular meeting place, until a hall was built on West Meeker Street in 1907... the Odd Fellows Lodge filled the community’s need for a meeting hall and an auditorium until it burned down in 1932.”

-From *History of Kent, Washington* by C. E. Cameron

Do you have any memories, knowledge or thoughts on the Odd Fellows?

This 1905 Carnation Company promotional booklet from the Museum's collection is shaped like a can and contains six pages of uses for Carnation sterilized cream. The introductory page claims, "Carnation Cream offers to the consuming public a Sterilized Cream more closely resembling fresh cream in appearance and flavor than any other cream on the market. Two parts water and one part cream gives a pure, rich milk, that will take the place of fresh milk for all table and cooking purposes."



CARNATION ICE CREAM.—(TO MAKE ONE GALLON) Two cans of **Carnation Cream**, 1 quart of fresh milk, 2½ teaspoonfuls of vanilla or other flavoring, ¼ of a pound of sugar. Dissolve the sugar in about a gill of cold water until it makes a syrup. Pour the cream and milk in the freezer which has been already packed ready for freezing. Dissolve in a little of the fresh milk 6 sheets of fine quality gelatine. Do not let this boil. When sugar is thoroughly dissolved add the flavoring to the syrup and stir well. Pour this into the cream in the freezer, add the gelatine the last thing, and be sure to pour in through a strainer. Put top on freezer and cover well with salt and ice and freeze as quickly as possible, so that the gelatine will be well mixed. After it is thoroughly frozen, cover over top of freezer with ice and salt and allow to stand one hour to harden.

CARNATION FUDGE.—Two cups sugar, ¼ cake of good chocolate (unsweetened), butter size of an egg, a scant half can of **Carnation Cream**. Put all in a sauce pan and allow to boil for 20 minutes, or until it forms a soft ball in cold water. When cooked, add 1 tablespoonful of vanilla and stir until thick. Then pour into buttered pans and allow to cool. Cut in squares.

At left is a page from the booklet, with recipes for ice cream and fudge. What interesting things do you notice about the recipes?

Alaska-Yukon-Pacific Exposition, 1909

The Alaska—Yukon—Pacific Exposition (A. Y. P. E.) was a world's fair held in Seattle in 1909, publicizing the development of the Pacific Northwest.

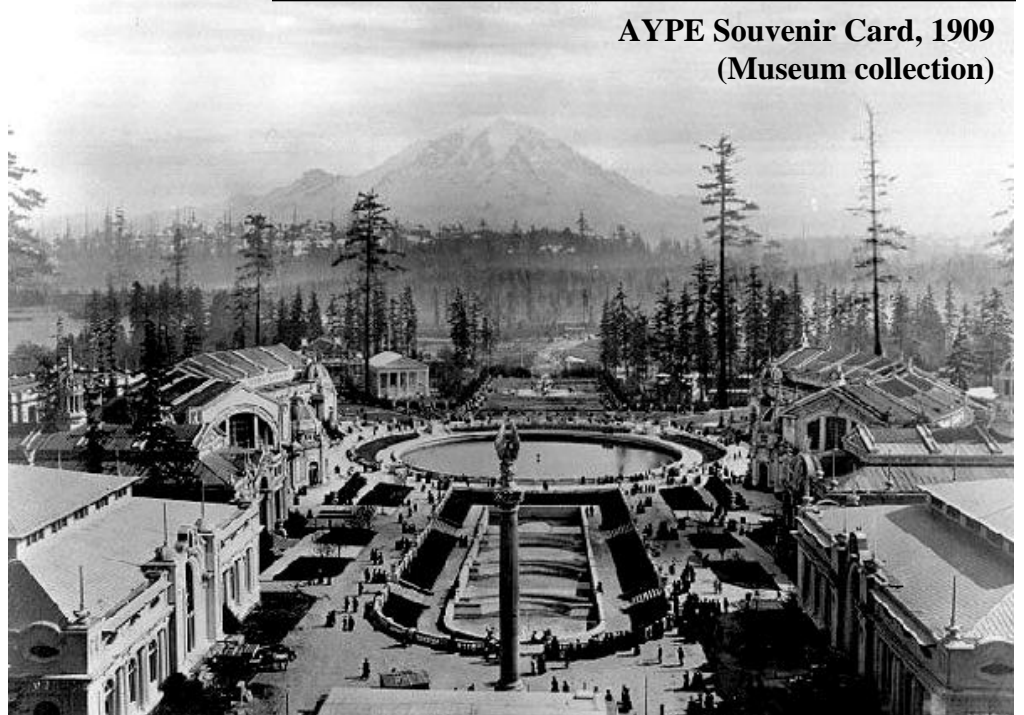
It was originally planned for 1907, to mark the 10th anniversary of the Klondike Gold Rush, but the organizers found out about the Jamestown Exposition being held that year, and rescheduled.

The fairgrounds became the campus of the University of Washington.

Opening Day, June 1, was declared a city holiday, and 80,000 people attended. Attendance was even higher—117,013—on "Seattle Day." Other big draws were days dedicated to various ethnic groups, fraternal organizations, and U.S. states. By the time the fair closed on October 16, over 3,700,000 had visited.



AYPE Souvenir Card, 1909
(Museum collection)



The Alaska-Yukon-Pacific Exposition with a view of Mount Rainier
(Public domain source)

What do you know about the A. Y. P. E.? Do you have memories of relatives who attended the Fair?
